

# Facility Planning Strategy - Saugeen Shores and Area

Business Committee of the Whole

January 10, 2023



# Current Status

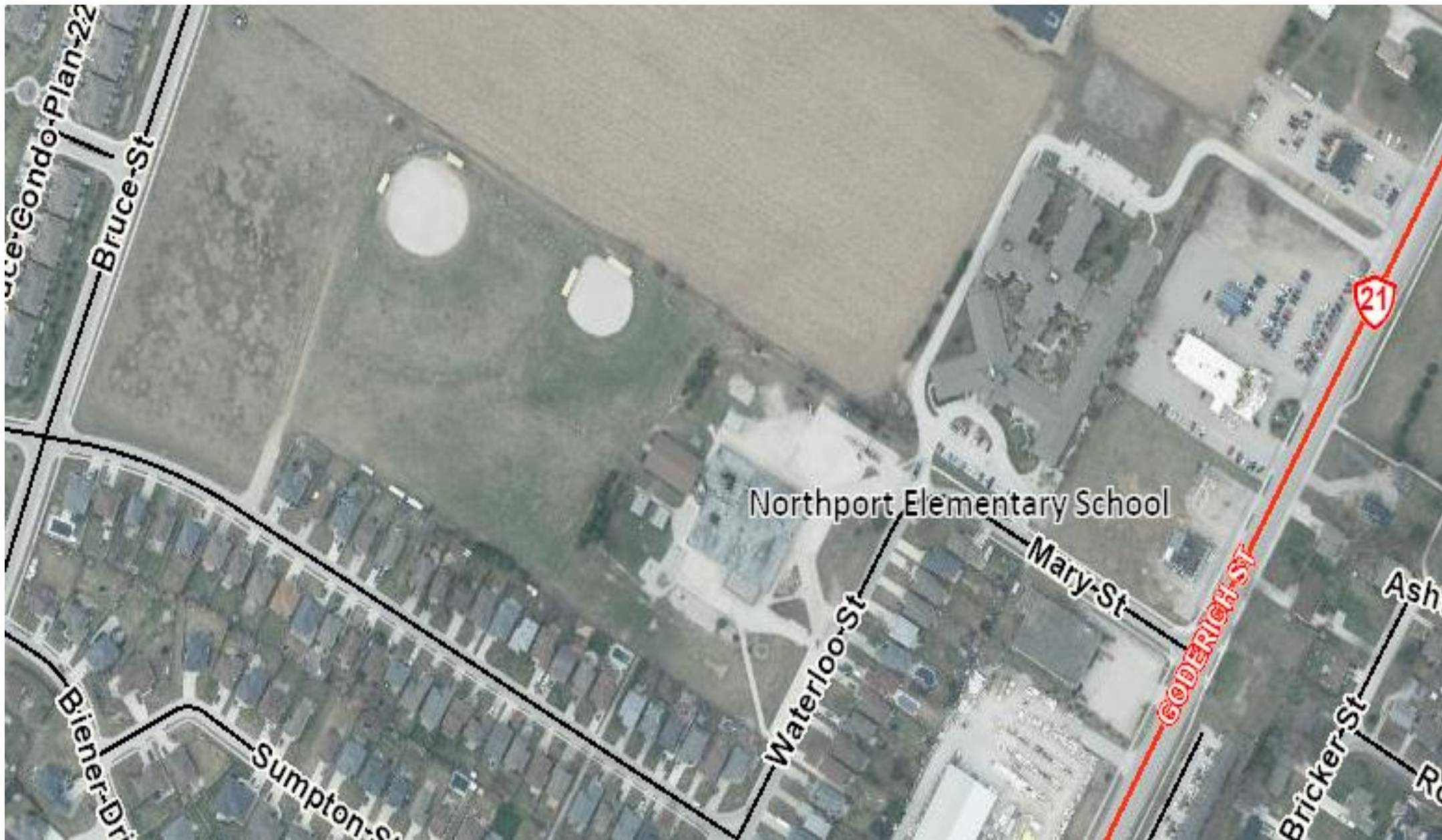
104% Utilization

	Northport Elementary School (JK-6)	Port Elgin-Saugeen Central School (JK-6)	Saugeen District Senior School (7-8)
Capacity (OTG)	410	683	216
Full-Time Equivalent (FTE)	486	617	256
Utilization	119%	90%	119%
Surplus Space/Space Shortage (-)	(76)	66	(40)
2022-23 Temporary Accommodation	92	0	46

# Projected for 2023-24

109% Utilization

	Northport Elementary School (JK-6)	Port Elgin-Saugeen Central School (JK-6)	Saugeen District Senior School (7-8)
Capacity (OTG)	410	683	216
Average Daily Enrolment (ADE)	539	630	264
Utilization	131%	92%	122%
Potential Surplus Space/Space Shortage (-)	(129)	53	(48)
2022-23 Temporary Accommodation	92	0	46



# Questions?

